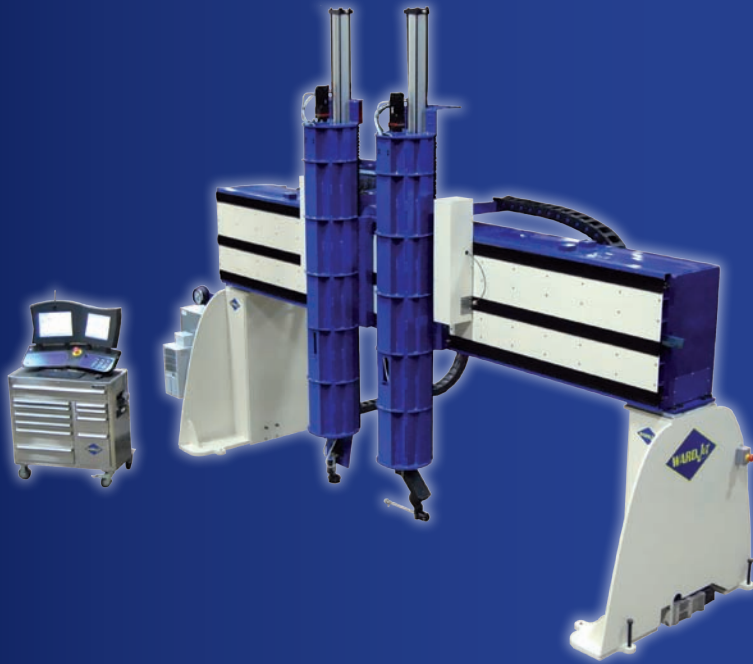




NOT JUST A WATERJET...

WARDJet News - October 2011

Featured Machine



G-Series

Expandable Waterjet System

This combination CNC 5 axis mill (up to 20 hp and 26,000 rpm) and 5 axis waterjet system is built to easily handle all those larger applications where waterjet cutting and CNC machining are required on the same part. With 5 feet (1.5m) Z travel standard, 13 or 20 feet (4m or 6m) cross beam, unlimited length and built for multiple cutting heads and Z carriages, the G Series is ideal for aerospace, nuclear, wind and heavy engineering applications.



The G-Series

Unique to the G is the ability to cut the full 5 feet depth vertically up the side of a wall without fouling the Z carriage body.

With one head typically holding a 5-axis cutting head, this leaves the second head open for a router for milling of complex parts. Imagine being able to mill and cut your parts all on the same table without ever having to adjust your material.

The G-Series is an expandable system allowing for flexibility in the final tank size. Start with a small tank and if you ever need to go bigger it's easy to swap out a larger tank for parts up to 120 feet long! With the expandable design you are also able to have a traditional water table under only part of the cutting envelope. With this configuration you are able to cut on both the water table as well as a flexible tooling system or on large parts directly on the ground.

With so much flexibility, the G-Series might be the best option for all of your cutting and milling needs.

For more information on this system and to see if a G is right for your application, Visit our [G-Series Page](#)



Rebuilding Ground Zero



The unveiling of the National September 11 Memorial and Museum (museum opens in 2012) at Ground Zero consists of a beautiful memorial park showcasing 152 bronze plates positioned around the memorial pools built in the footprints of Twin Towers.

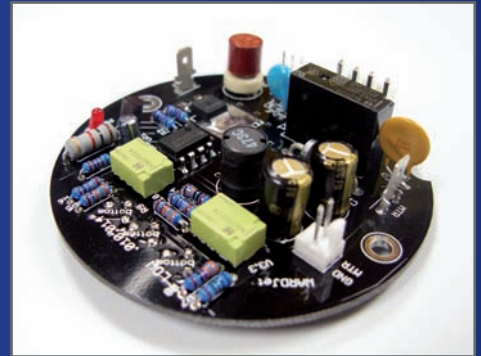
Service Metal Fabricating, a family business in Rockaway, NJ, was honored to be chosen as one of the fabricators for this precious memorial. They were tasked with cutting all 2,982 names through inch thick bronze, each 10 feet by 5 feet, weighing a little more than 1,000 pounds. The goal was that individuals can physically touch each name of those lost at Ground Zero, at the Pentagon, on Flight 93 and also the six victims from the first World Trade Center bombing on Feb. 26, 1993.

We at WARDjet are honored to have played a small part in this memorial, supplying the waterjet used by Service Metal.

Parts and Consumables

WARDJet strives to be the first and only call you ever need to make regarding waterjet cutting. Even after you've made a purchase, we're your #1 source for all things waterjet related. Need an orifice? Need to change nozzle sizes? WARDJet Has you covered. Our extensive parts department is always available to get you the parts you need to avoid any wasted cutting time.

Even if you don't own a WARDJet we are here to help. WARDJet's parts department is able to supply parts for most major manufacturers. In some cases, we might even be able to suggest an alternate part that has a longer life. We have always believed in using and supplying the best quality parts available. That's the way we've done business and that's the way we will continue to do business.



Call or email us at parts@wardjet.com today to make sure you have all the right parts to get the most out of your waterjet cutting system today, and well into the future.

We're Increasing Production!



We've been busy working to better accommodate your waterjet cutting needs. In every area we have increased our capacity in order to get your waterjet on the floor before the first of the year. Get your waterjet before 2012 and take advantage of generous tax benefits.

With almost all parts of our machines produced and assembled on site, we are able to reduce lead times and get you cutting faster. Make sure to secure your order today to ensure you can have all of the benefits of a WARDJet before 2012.